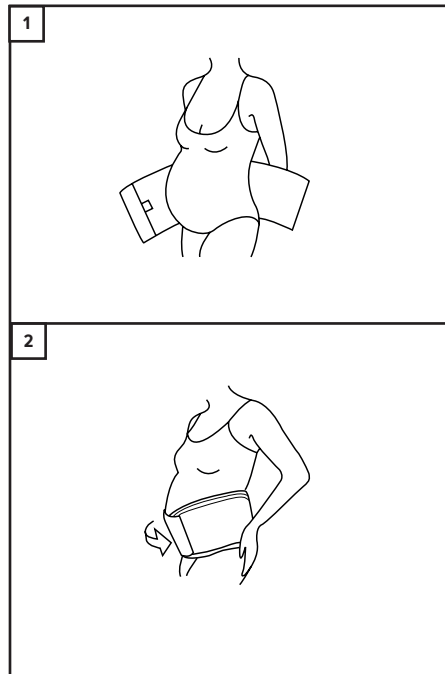


MBL - Maternity Belt

EN	ABDOMINAL BINDER, REUSABLE
DE	ABDOMINALBINDE, WIEDERVERWENDBAR
FR	BANDAGE ABDOMINAL, RÉUTILISABLE
ES	FAJA ABDOMINAL, REUTILIZABLE
IT	FASCIA ADDOMINALE, RIUTILIZZABILE
NL	BUIKBANDAGE, HERBRUIKBAAR
DK	STØTTEBIND TIL ABDOMEN, GENANVENDELIGT
FI	VATSAN TUKISIDE, UDELLEEN KÄYTETTÄVÄ
SE	BUKBINDA, FLERGÅNGS
NO	BIND, STØTTE, ABDOMINALT, FLERGANGSBRUK
PL	BRZUSZNY PAS PODTRZYMUJĄCY, WIELOKROTNEGO UŻYTKU
GR	ΖΩΝΗ ΚΟΙΜΙΑΣ, ΕΠΑΝΑΧΡΗΣΙΜΟΠΟΙΟΥΜΕΝΗ



Product Description

Made in quality elastic with oblique-angled hook/loop closure for circumferential support around the pelvis.

Usage Information (See diagram)

1. With the Promedics label in the right hand and to the side, position the belt on the small of the back at the upper level of the hips. Pull the left hand side of the belt downwards to lie under the lower abdomen. Pull the right hand side of the belt down and across, on top of the left hand side of the belt.
2. Close the belt firmly but comfortably, using the hook/loop fastening at the front. The belt should support the lower abdomen.

Indications for Use

- Strong support around the pelvis.
- Supports the two sacroiliac joints.
- Firm support of the symphysis pubis joint.
- Light tension under the abdomen.
- Post-natal conditions.

It is recommended that individuals seek guidance from a medical practitioner regarding the most appropriate brace and wearing schedule.

Contraindications

- Unsuitable for prolonged use.
- Care is required to ensure that the garment is not constrictive.
- Any known allergy and/ or hypersensitivity to any materials listed in the product composition.
- Perform regular skin and circulation checks.

Warnings and Precautions

We recommend the initial fitting of this device be conducted by a suitably qualified healthcare professional who will advise the period of use.

- Carefully read all instructions and warnings prior to use.
- Follow all instructions to ensure proper performance of the device.
- Do not use if liniments, ointments, gels, creams or any other substances have been applied to the affected area.
- Do not re-use for another patient, doing so risks cross infection and can compromise product integrity.
- Perform regular skin and circulation checks, especially patients with diabetes, vascular deficiencies and neurological conditions.
- Should any adverse reactions occur, please cease use and contact your healthcare professional or provider of this product.
- The durability of the device may be compromised by certain factors, e.g., objects with sharp edges or damage to the hook and loop fasteners. To prevent this the hook and loop fasteners should always be fastened when the device is not being worn or when being washed.

Washing and Care Instructions

1. Close over all hook/loop straps.
2. Hand wash in cool water using mild detergent.
3. Rinse and dry flat.
4. Do not spin or tumble dry.
5. Do not use fabric conditioner at any time.
6. Check for any degradation that may affect use.
7. Periodically check hook/loop fasteners are operating securely.

Product Family Composition

Cotton, Elastane, Natural Rubber, Nylon, Polyamide, Polyester, Steel, Viscose.

Storage and Transport Conditions

Store in a cool, dry place out of direct sunlight, in the original packaging.

Recycling and Disposal

Packaging and constituent parts should be recycled or safely disposed in accordance with local or national laws.

Serious Incident

Report any serious incident to the manufacturer and the competent authority of the EU Member state, or country in which you reside.


 **MEDICAL DEVICE**

 **SINGLE PATIENT - MULTIPLE USE**

 **CAUTION**

 **CONTAINS LATEX**



 Promedics Orthopaedics Ltd.
Port Glasgow Industrial Estate, Gareloch Road, Port Glasgow,
Scotland, UK, PA14 5XH
Tel: +44 (0) 1475 746 400 | Email: enquiries@promedics.co.uk
www.promedics.co.uk

   **EMERGO EUROPE**
Westervoortsedijk 60,
6827 AT Arnhem
The Netherlands

©2023 Promedics Orthopaedics Ltd. All Rights Reserved.

MBLIFUB revised 3/23