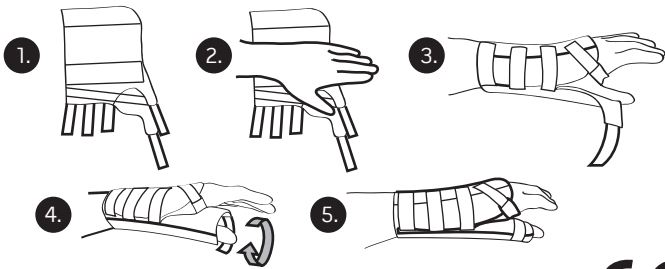


Wrist / Thumb Brace

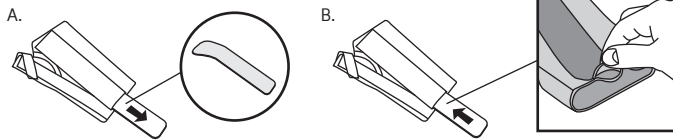
Fitting / Care Instructions



1. Open hook / loop fastening and open brace out flat.
2. Position hand in brace as shown.
3. Close hook / loop fastening.
4. Close hook / loop fastening securely around thumb.
5. Re-adjust for comfort as required, ensuring stays are in position.



Care Instructions



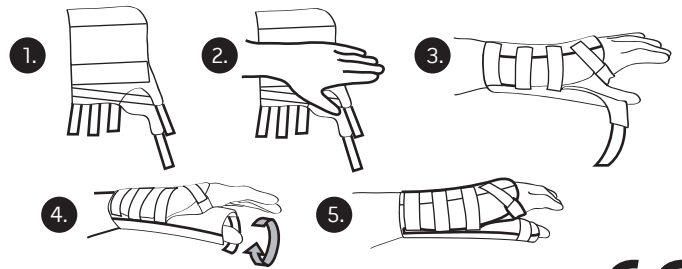
1. Remove metal splint (See diagram A)
2. Close over all hook/loop straps.
3. Hand wash brace in cool water.
4. Rinse.
5. Dry flat.
6. Do not spin or tumble dry.

Important:
Before using brace again, replace metal splint ensuring splint is correct way round and splint is tucked under edge / 'lip' of pocket. (See diagram B)

www.attherapy.co.nz

Wrist / Thumb Brace

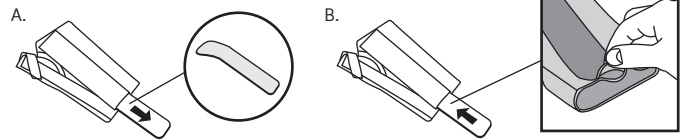
Fitting / Care Instructions



1. Open hook / loop fastening and open brace out flat.
2. Position hand in brace as shown.
3. Close hook / loop fastening.
4. Close hook / loop fastening securely around thumb.
5. Re-adjust for comfort as required, ensuring stays are in position.



Care Instructions



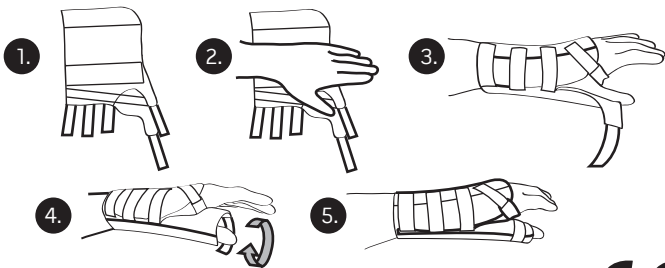
1. Remove metal splint (See diagram A)
2. Close over all hook/loop straps.
3. Hand wash brace in cool water.
4. Rinse.
5. Dry flat.
6. Do not spin or tumble dry.

Important:
Before using brace again, replace metal splint ensuring splint is correct way round and splint is tucked under edge / 'lip' of pocket. (See diagram B)

www.attherapy.co.nz

Wrist / Thumb Brace

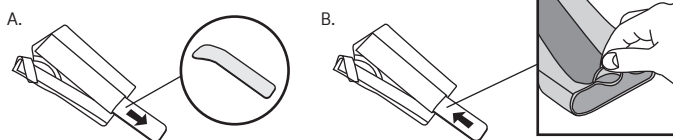
Fitting / Care Instructions



1. Open hook / loop fastening and open brace out flat.
2. Position hand in brace as shown.
3. Close hook / loop fastening.
4. Close hook / loop fastening securely around thumb.
5. Re-adjust for comfort as required, ensuring stays are in position.



Care Instructions



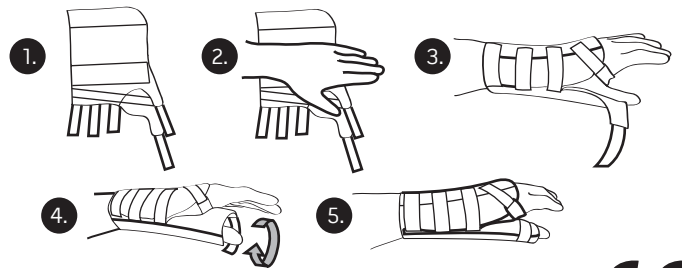
1. Remove metal splint (See diagram A)
2. Close over all hook/loop straps.
3. Hand wash brace in cool water.
4. Rinse.
5. Dry flat.
6. Do not spin or tumble dry.

Important:
Before using brace again, replace metal splint ensuring splint is correct way round and splint is tucked under edge / 'lip' of pocket. (See diagram B)

www.attherapy.co.nz

Wrist / Thumb Brace

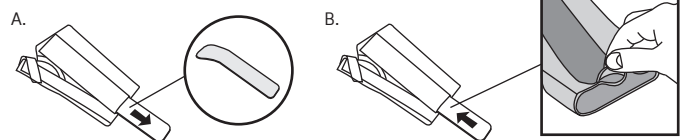
Fitting / Care Instructions



1. Open hook / loop fastening and open brace out flat.
2. Position hand in brace as shown.
3. Close hook / loop fastening.
4. Close hook / loop fastening securely around thumb.
5. Re-adjust for comfort as required, ensuring stays are in position.



Care Instructions



1. Remove metal splint (See diagram A)
2. Close over all hook/loop straps.
3. Hand wash brace in cool water.
4. Rinse.
5. Dry flat.
6. Do not spin or tumble dry.

Important:
Before using brace again, replace metal splint ensuring splint is correct way round and splint is tucked under edge / 'lip' of pocket. (See diagram B)

www.attherapy.co.nz